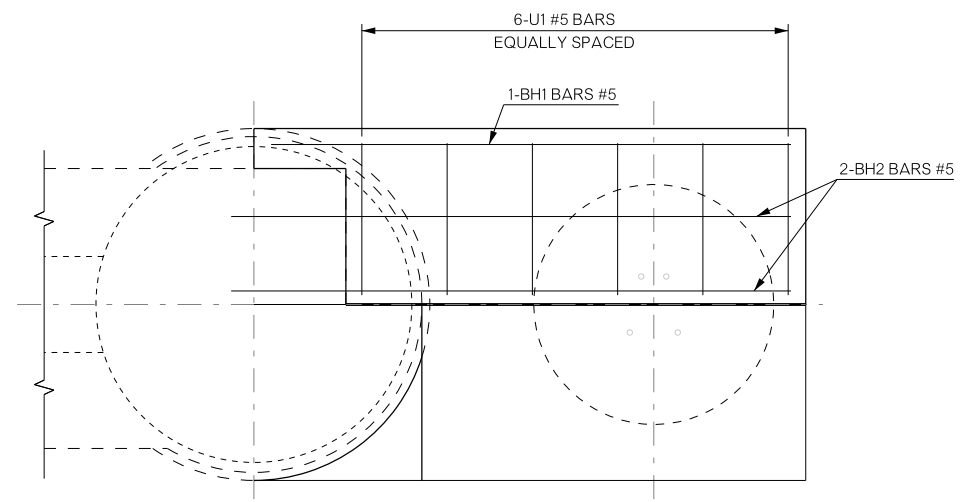
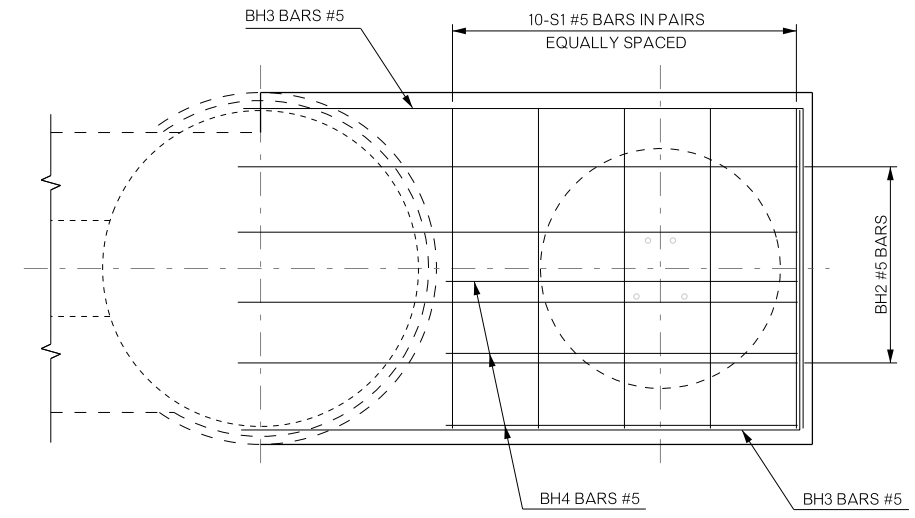


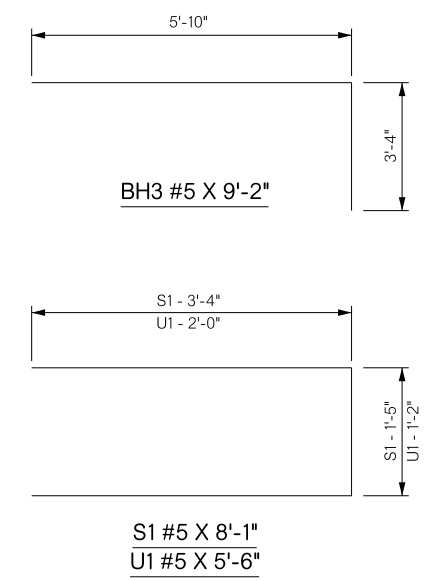
REVISIONS		
REV. NO.	DESCRIPTION	DATE



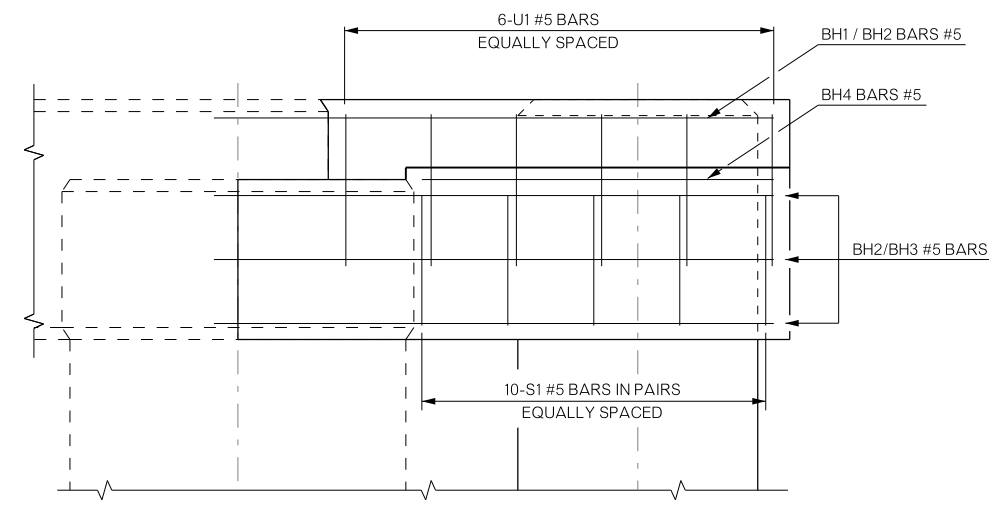
PLAN VIEW TOP STEP REINFORCING



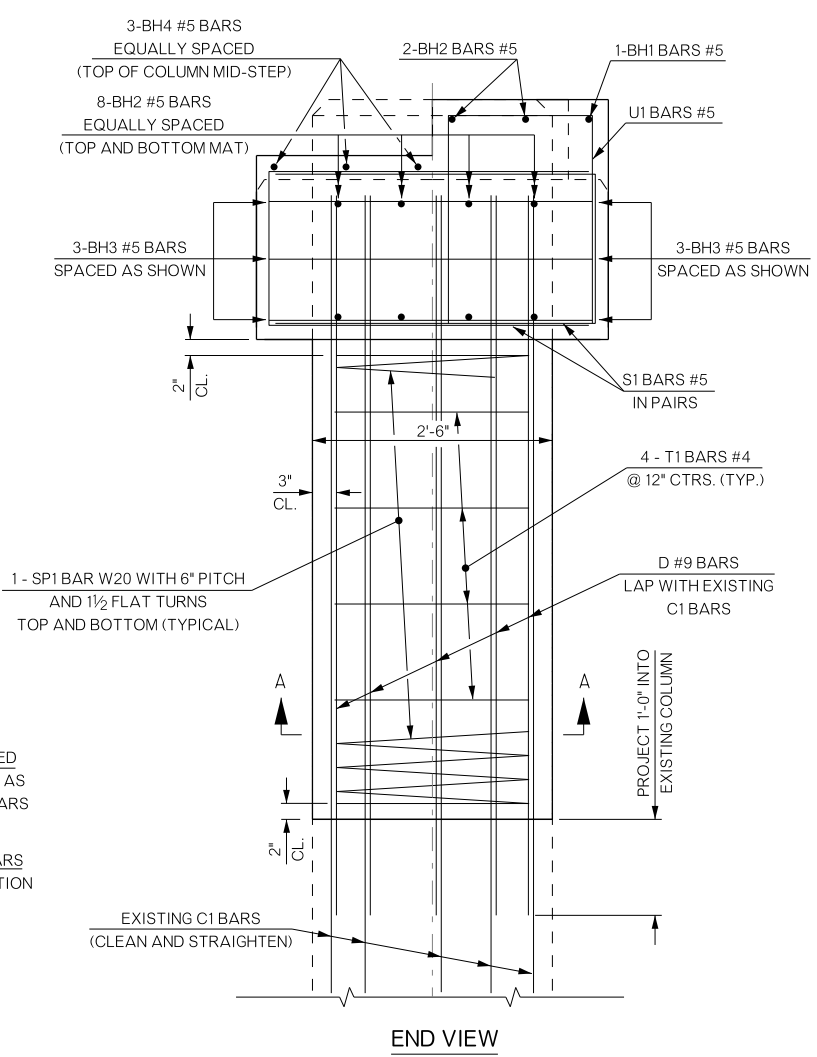
PLAN VIEW BOTTOM STEP REINFORCING



PIER BAR LIST ONE SHOWN (FOUR REQUIRED)				
MARK	NO.	SIZE	FORM	LENGTH
EPOXY COATED				
BH1	1	#5	STR.	5'-5"
BH2	10	#5	STR.	5'-8"
BH3	6	#5	STR.	9'-2"
BH4	3	#5	STR.	3'-8"
S1	10	#5	BNT.	8'-1"
U1	6	#5	BNT.	5'-6"
COLUMNS				
EPOXY COATED				
D1	8	#9	STR.	7'-4"
NON-EPOXY COATED				
SP1	1	W20	SPIRAL	77'-8"
T1	4	#4	BNT.	8'-4"



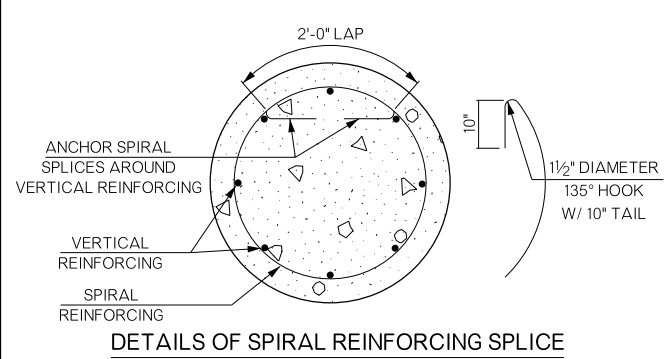
ELEVATION VIEW



END VIEW

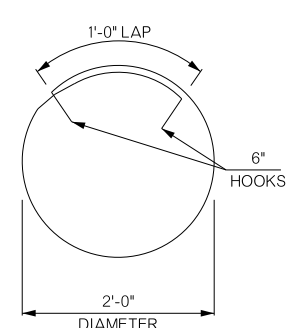
ALL CONCRETE COVER OVER REINFORCING SHALL BE 2" UNLESS OTHERWISE NOTED.

ALL EDGES OF NEW PIER CAP EXTENSION SHALL HAVE A 1 1/2" CHAMFER EXCEPT FOR PEDESTAL EDGES WHICH SHALL HAVE A 3/4" CHAMFER.

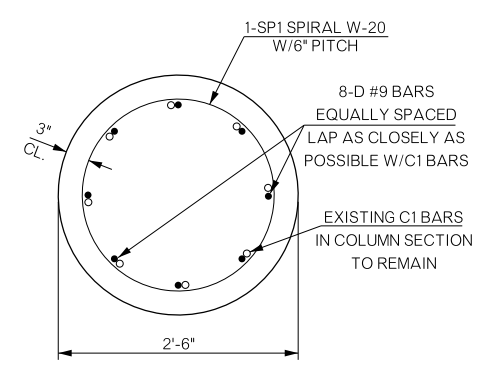


DETAILS OF SPIRAL REINFORCING SPLICE

NOTE: SPIRAL BARS SHALL CONFORM TO AASHTO M32. SPIRAL BAR LENGTH DOES NOT INCLUDE LAP. IF A LAP IS REQUIRED, THE LENGTH OF THE LAP SHALL BE AS SHOWN.



T1 #4 x 8'-4"



SECTION A-A

PIER QUANTITIES ONE SHOWN (FOUR REQUIRED)		
ITEM	UNIT	TOTAL
STAINLESS STEEL EXPANSION BEARING ASSEMBLY	EA.	2.00
CLASS A CONCRETE	C.Y.	2.30
REINFORCING STEEL	LB.	80.00
EPOXY COATED REINFORCING STEEL	LB.	460.00
WATER REPELLENT (VISUALLY INSPECTED)	S.Y.	25.00
CORROSION INHIBITOR (SURFACE APPLIED)	S.Y.	1.00

BRIDGE "A" SH-91 OVER SAND CREEK	BRYAN COUNTY	Design	N/A	N/A
COLUMN REPAIR REINFORCING		Detail	RAH	7/17
		Check	TEE	8/17
STATE OF OKLAHOMA		Squad	HENSLLEY	
DEPARTMENT OF TRANSPORTATION		Engr.	DEFRANCO	
JOB/PIECE NO. 32756(04)	SHEET NO. B003			